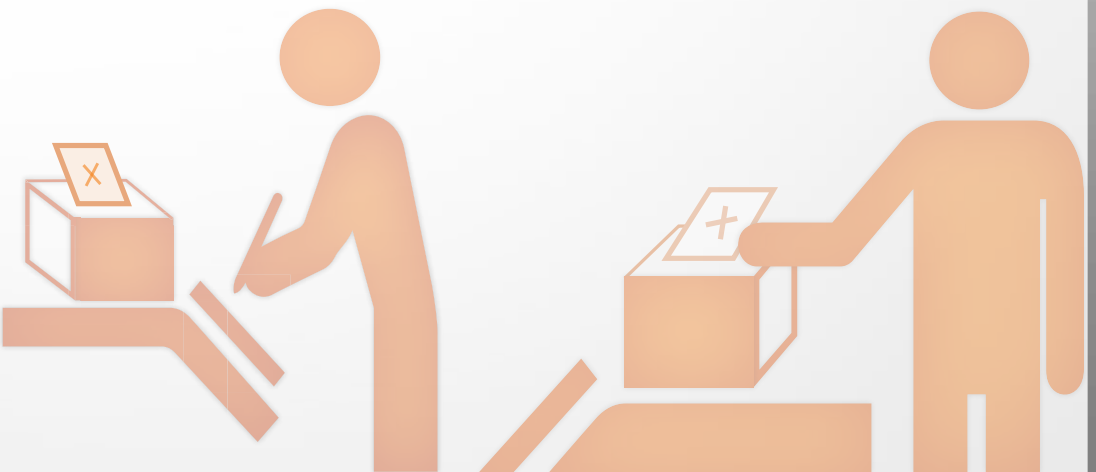
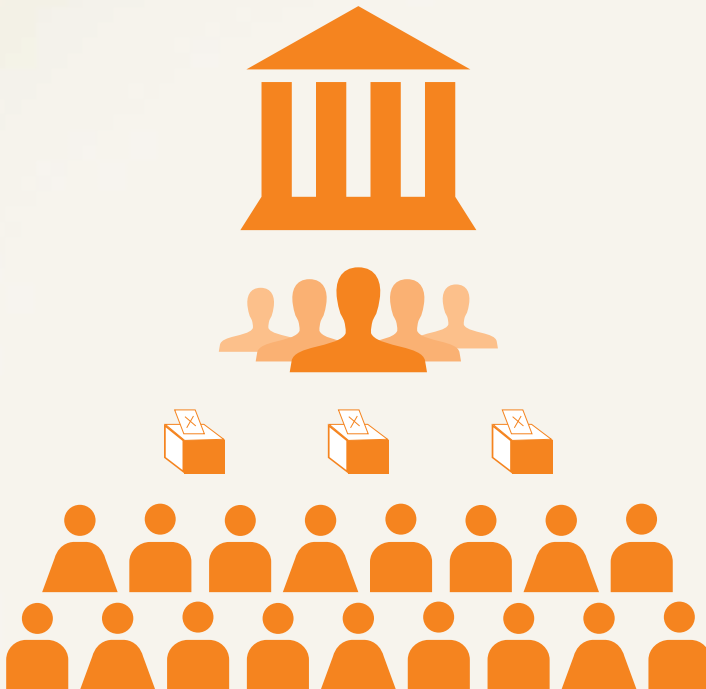


GENERAL ELECTIONS

**WHAT YOU NEED
TO KNOW ABOUT
OVERSEAS VOTING**



About the General Election



After the dissolution of the Parliament, the President will call for a General Election. This is the time when you can decide which candidate(s) you want to represent you and be elected into the new Parliament. Voting is compulsory in Singapore, so if your constituency is contested, you must present yourself as a voter at your assigned Polling Station on Polling Day and cast your vote.

Types of electoral divisions

Electoral divisions (also called constituencies) are areas within Singapore demarcated by the Electoral Boundaries Review Committee for the purposes of elections. There are 2 types of electoral divisions or constituencies in Singapore and they are the Group Representation Constituencies (GRCs) and Single Member Constituencies (SMCs). The registers of electors are prepared based on the constituencies. Group Representation Constituencies are electoral divisions where a group of candidates numbering from 3-6 contest as a team in the election. One of the members of the team must belong to the either the Malay Community or the Indian and Other Minority Communities. This is to ensure that there is adequate representation of minority representatives in the Parliament. A Single Member Constituency is an electoral division where candidates contest individually.

You will be assigned to vote in the constituency according to your latest NRIC address recorded in the Registers of Electors as on the cut-off date 1 January 2011.



Group Representation Constituencies (GRCs)



Single Member Constituencies (SMCs)

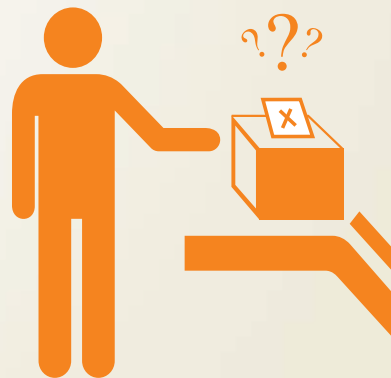
How do I know if I need to vote?

If you are a registered overseas elector, you will receive a poll letter if your constituency is contested.

Your poll letter will be mailed to your NRIC address if your constituency is contested after Nomination closes. The poll letter will contain details of the date and hours of polling at your allotted overseas polling station. Concurrently, a poll card containing details of the polling day in Singapore, and name/venue of the local polling station allotted to you, will be sent to your latest Singapore NRIC address or Contact Address.

If you have not received your poll letter before Polling Day, you can still check your poll letter information by:

- Accessing our eServices at the Elections website (<http://www.elections.gov.sg>)
- Calling the Elections Department Hotline at +65 6818-0088



Where to vote?

You will have to cast your vote at your assigned overseas polling station and change of overseas polling station is not allowed after 19 April 2011.

Should you return to Singapore on Polling Day, you are also allowed to cast your vote at your local polling station by bringing your local poll card and NRIC or passport.



When to vote?

The date and time for the overseas poll is as follows:

DAY/DATE/TIME	CITIES
Friday, 6 May 2011 (8 a.m. - 8 p.m. local time)	London, New York, Washington & San Francisco
Saturday, 7 May 2011 (8 a.m. - 8 p.m. local time)	Canberra, Tokyo, Beijing, Hong Kong & Shanghai



You can go to your assigned overseas polling station at any time during those hours to cast your vote – you need not rush to vote. However, please avoid going to vote too late as no more ballot papers will be issued to voters who are still in the queues when polling closes at 8 p.m..

What if I am not a registered overseas elector?

Should you return to Singapore on Polling Day and your constituency is contested, you can cast your vote in Singapore. If you are unable or fail to vote on Polling Day, your name will be removed from the register of electors by Law. However, you can apply to restore your name to the Registers of Electors from **one** month after General Election 2011.

Remember that voting is compulsory. Keep the poll letter and bring it along with your original NRIC or passport to your overseas polling station indicated on the poll letter on Polling Day.

Can I still register as an overseas elector?

Registration for overseas electors has closed once the Writ of election is issued on 19 April, 4 p.m.. The Parliamentary Elections Act states that any person not resident in Singapore but whose name is in the register of electors for an electoral division may, at any time before a writ of election is issued, apply to register as an overseas elector. The cut-off date is necessary to facilitate the election process.

How do I cast my vote?

It takes just **7** easy steps for you to cast your vote:

- **Check your name in the Registers of Electors**
Your name must be found in the certified Register of Electors for a constituency to vote at the election in that constituency.
- **Get your poll letter**
You will receive a poll letter via mail after Nomination Day if your constituency is contested. Keep the poll letter and bring it along with your original NRIC/ passport to the overseas polling station indicated on the poll letter on Polling Day.
- **Get to know your candidates**
Between Nomination Day and before the eve of Polling Day, you can find out more about the candidates contesting in your constituency by reading newspapers, watching television, attending election rallies or just by talking to your friends and family members.
- **Go to your Polling Station on Polling Day**
Make your way to the overseas polling station indicated on your poll letter. You will have to bring along your poll letter and your original NRIC, passport or military identity cards issued by Ministry of Defence, Singapore Police Force and Singapore Civil Defence Force. Photocopies of such documents are not accepted.
- **Identify yourself at the Polling Station**
Show your Poll Letter and relevant identification documents to the polling official on duty.
- **Proceed to the Polling Booth**
Upon receiving your ballot paper, proceed to the polling booth to mark your ballot paper.

Do mark your choice CLEARLY with a "X" in the box-space on the right-hand side, opposite the name and symbol of the candidate or group of candidates of your choice.

Remember, your vote is secret.

- **Fold your ballot paper and deposit it in the ballot box**

Dos & Don'ts of Voting

DO

- **Mark your choice on the ballot paper by marking a "X".
Choose only one choice.**
Plural voting is an offence. Your vote will be considered invalid if you indicate more than one choice on the ballot paper.
- **Deposit your ballot paper into the ballot box before leaving the Polling Station**
It is an offence to take any ballot paper out of the Polling Station. Before you leave the Polling Station, please deposit your ballot paper into the ballot box next to your Polling Booth.
- **Ask for assistance from election officials if you are unsure about voting procedures**
Our election officials have been trained on the voting procedures. They will be on hand to explain to you the voting procedures, but not who to vote for.
- As your vote is secret, your child will not be allowed to accompany you into the Polling Place. You are strongly encouraged not to bring your children to the Polling Station.

DON'T

- **Do not use any camera, handphone with camera, video or photographic equipment in the Polling Station**
Voting is secret. No unauthorised video recording is allowed within the polling station.
- **Do not bring bags to the Polling Station**
You should avoid bringing bags to the Polling Station. As there may be security checks at the entrance of the Polling Station, your bags will be subjected to checks and that may slow down the voting process.

- **No smoking**

Cigarette butts can be a hazard within the confined area of a Polling Station. To safeguard everyone's safety, please do not smoke within the premises of the Polling Station.

Secrecy of Your Vote

The secrecy of your vote is not compromised by the reason of having a serial number on the ballot paper. Serial numbers on ballot papers enable strict accounting of all ballot papers issued and cast. This is a means to deal with the threat of ballot boxes being stuffed with false ballot papers. The ballot paper number is there to protect the integrity of the democratic process, and not to undermine the secrecy of your vote.

Although the link between the ballot paper number and the electoral register through the counterfoil does facilitate tracing from a ballot paper to a voter's identity on the register, however, ballot papers can be examined only under strict conditions and only by a court order. There are safeguards that make it extremely difficult to find out how any particular voter voted.

**REMEMBER:
VOTING IS COMPULSORY;
VOTING IS SECRET**

To find out more information,
please visit the Elections website at
<http://www.elections.gov.sg>
or call the Election Hotline at
1800-818-0088 (local)
or **(+65) 6818 0088** (overseas)

Published by

